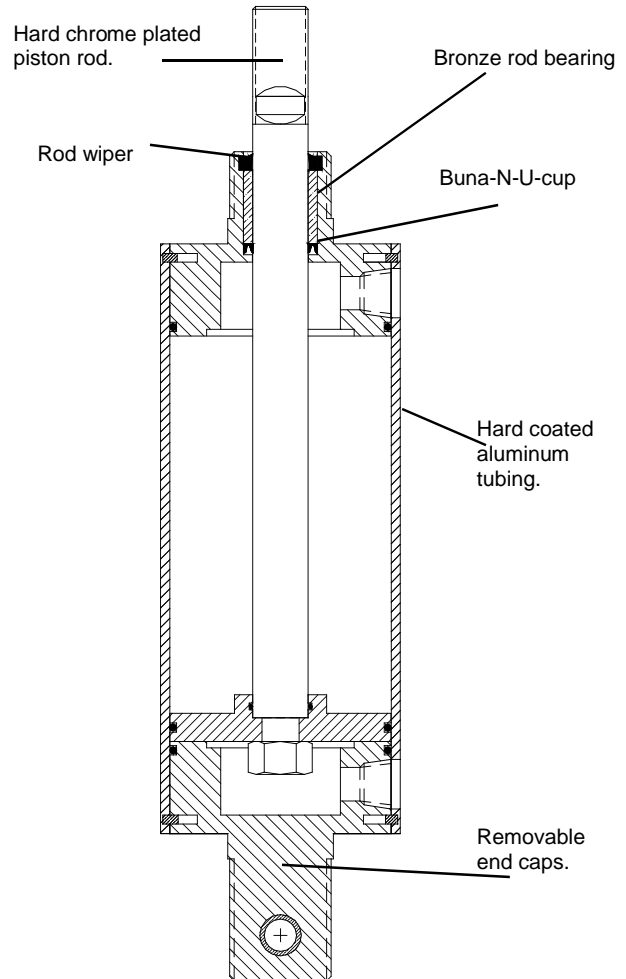
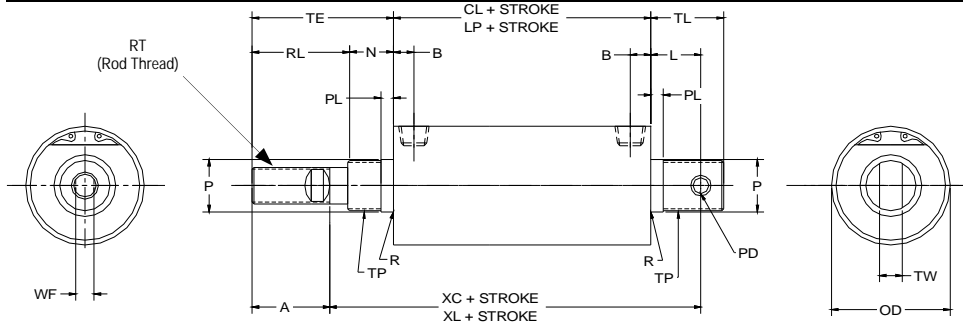


Series RD Cylinder

Design Features

- ◆ Available in 1-1/2", 2", 2-1/2", 3", and 4" bore.
- ◆ Self-lubricating bronze rod bearing.
- ◆ Hard chrome plated and polished piston rod with standard full male thread.
- ◆ Rod wiper provides seal protection.
- ◆ Self-adjusting Buna-N-cup rod seal. Piston seals are either Buna-N-cups or O-ring.
- ◆ Hard coated aluminum tubing on inside for low friction and corrosion resistance.
- ◆ Cylinder heads are machined from high tensile strength aluminum alloy.
- ◆ 200 PSI air pressure rating.
- ◆ Temperature range with standard seals: 10°F to 200°F.

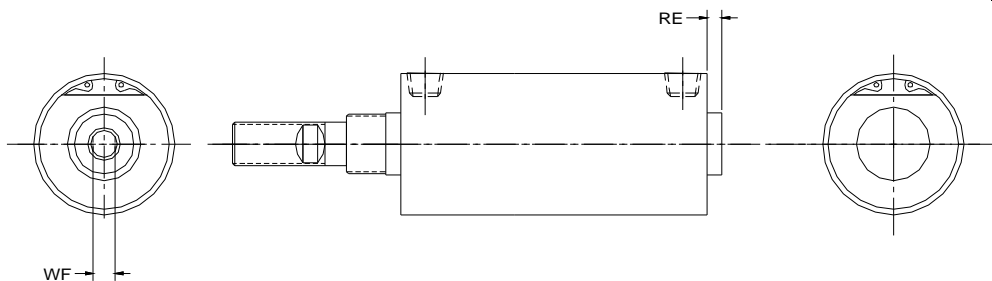




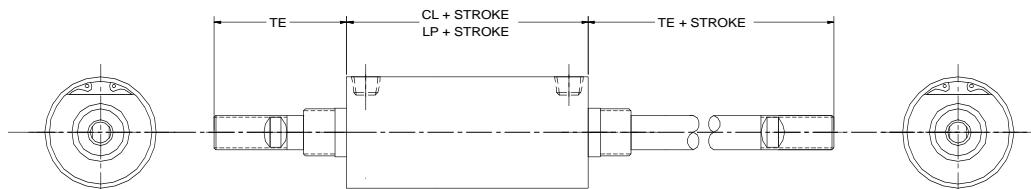
Double Acting with Tang

MODEL	BORE DIA.	RT	A	B	F	L	N	±.002	R	CL	LP	EE	OD	PD
RD150	1-1/2	1/2	1-1/4	33/64	1/2	7/8	1	1.057	1/64	2-5/8	3-5/8	1/4	1-3/4	5/16
RD200	2	5/8	1-1/4	33/64	1/2	7/8	1	1.057	1/64	2-5/8	3-5/8	1/4	2-1/4	5/16
RD250	2-1/2	3/4	1-1/2	9/16	1/2	1-3/8	1-1/4	1.432	3/32	2-7/8	3-7/8	3/8	2-3/4	7/16
RD300	3	3/4	1-1/2	9/16	1/2	1-3/8	1-1/4	1.432	3/32	2-7/8	3-7/8	3/8	3-1/4	7/16
RD400	4	1	1-7/8	13/16	1/2	1-7/16	1-1/4	1.777	3/32	4	5	1/2	4-1/4	1/2

Double Acting No Tang



Double Acting Double Ended



BASE		ROD												
MODEL	BORE DIA.	PL	RE	RL	RT	TE	TL	TP	TW	XC	XL*	CL	LP*	
RD150	1-1/2	1/2	7/32	1/8	1-7/16	1/2 - 13	2-7/16	1-1/4	1-1/16 - 18	1/2	4-11/16	5-11/16	2-5/8	3-5/8
RD200	2	5/8	7/32	1/8	1-7/16	5/8 - 11	2-7/16	1-1/4	1-1/16 - 18	1/2	4-11/16	5-11/16	2-5/8	3-5/8
RD250	2-1/2	3/4	11/32	1/8	1-11/16	3/4 - 10	2-15/16	2	1-3/8 - 12	5/8	5-11/16	6-11/16	2-7/8	3-7/8
RD300	3	3/4	11/32	1/8	1-11/16	3/4 - 10	2-15/16	2	1-3/8 - 12	5/8	5-11/16	6-11/16	2-7/8	3-7/8
RD400	4	1	5/16	1/8	2-1/4	1-8	3-1/2	2-3/16	1-3/4 - 12	3/4	7-1/6	8-1/16	4	5

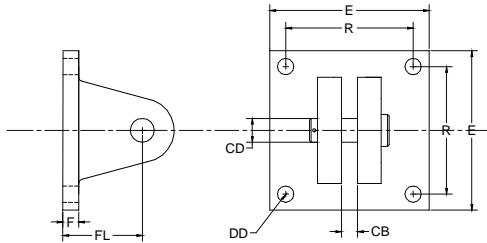
* Required length for magnetic pistons or dual U-Cup seals.

Series **RD** Cylinder



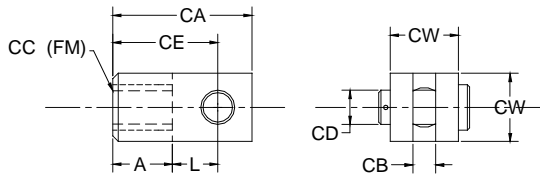
www.motioncontrolslc.com
 1174 Western Drive Hartford, WI 53027
 262-673-9255 262-673-9554 fax
 2008

CLEVIS BRACKET

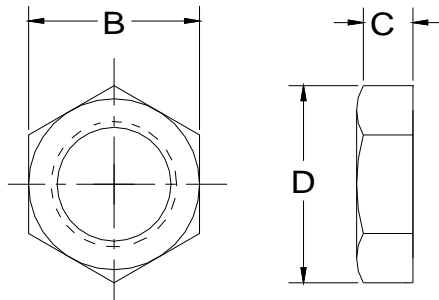


BASE PART		E	F	R	CB	CD	DD	FL
MODEL	NO.							
RD150	M-9107	3	5/16	2-1/4	1/2	5/16	1/4	1-3/4
RD200	M-9107	3	5/16	2-1/4	1/2	5/16	1/4	1-3/4
RD250	M-9108	4	3/8	3	5/8	7/16	3/8	2-3/8
RD300	M-9108	4	3/8	3	5/8	7/16	3/8	2-3/8
RD400	M-9109	5	7/16	3-3/4	3/4	1/2	7/16	3

ROD CLEVIS AND PIN



BASE PART		A	L	CA	CB	CC	CD	CE	CW
MODEL	NO.								
RD150	M-9103	1	11/16	2-1/4	3/8	1/2-13	5/16	1-3/4	1
RD200	M-9104	1	11/16	2-1/4	3/8	5/8-11	5/16	1-3/4	1
RD250	M-9105	1	27/32	2-5/8	1/2	3/4-10	7/16	2-5/64	1-1/8
RD300	M-9105	1	27/32	2-5/8	1/2	3/4-10	7/16	2-5/64	1-1/8
RD400	M-9106	1	1-1/32	3-1/16	11/16	1-8	5/8	2-25/64	1-1/2



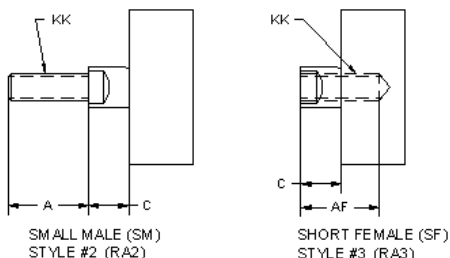
BASE PART		B	C	D
MODEL	NO.			
RD150	M-9100	1-7/16	15/32	1-3/4
RD200	M-9100	1-7/16	15/32	1-3/4
RD250	M-9101	2-1/16	25/32	2-7/16
RD300	M-9101	2-1/16	25/32	2-7/16
RD400	M-9102	2-1/2	15/32	2-15/16

NUT

Optional Rod Ends

** AD and CD should be used to differentiate one end from the other on a double rod cylinder.

OPTIONAL ROD ENDS



BASE MODEL	BORE	ROD DIA	A**		(SM + SF) STYLE NO.2,3 KK
			AD	AF	
RD 150	1-1/2	1/2	1-1/4	3/4	5/16-18
RD 200	2	5/8	1-1/4	3/4	7/16-20
RD 250	2-1/2	3/4	1-1/2	3/4	1/2-13
RD 300	3	3/4	1-1/2	3/4	1/2-13
RD 400	4	1	1-7/8	1-1/8	3/4-10

SERIES RD ORDERING INFORMATION

SPECIFIC INFORMATION		CODE	RD	N	250	SE	SL2	RA1	Options	
SERIES	RD SERIES CYLINDER	RD								
MOUNTING STYLE	PIVOT MOUNT	P								
	NOSE MOUNT	N								
MODEL BORE SIZE	1 1/2" BORE	150								
	2" BORE	200								
	2 1/2" BORE	250								
	3" BORE	300								
	4" BORE	400								
END STYLE	SINGLE END	SE								
	DOUBLE END	DE								
STROKE	SPECIFY STROKE LENGTH IN DECIMALS	SL								
ROD END STYLE	SINGLE END ROD OPTIONS									
	FULL MALE THREAD "A" END	RA1								
	STANDARD ROD END (JAM NUT INCLUDED)									
	REDUCED MALE THREAD "A" END	RA2								
	FEMALE THREAD "D" END	RA3								
	DOUBLE END ROD OPTIONS (Supply both)									
	FULL MALE THREAD "D" END (STANDARD)	RD1								
	REDUCED MALE THREAD "D" END	RD2								
	FEMALE THREAD "D" END	RD3								
ADDITIONAL OPTIONS	ROD CLEVIS AND PIN (FACTORY ASSEMBLED)	MF								
	CLEVIS BRACKET & PIN (FACTORY ASSEMBLED)	MG								
	NOSE MOUNT NUT	NM								
	STAINLESS STEEL ROD	SS								
	MAGNETIC PISTON	SP								
	DOUBLE U-CUP DESIGN	MT								
	FRONT CUSHION	FC								
	REAR CUSHION	RC								
	VITON SEALS	VS								
	ROD MODIFICATION	RM								
	(INCLUDE SPECIFIC DETAILS)									
	SPELL OUT ALL OTHER DETAILS AND PROVIDE DRAWING IF POSSIBLE									

HOW TO ORDER